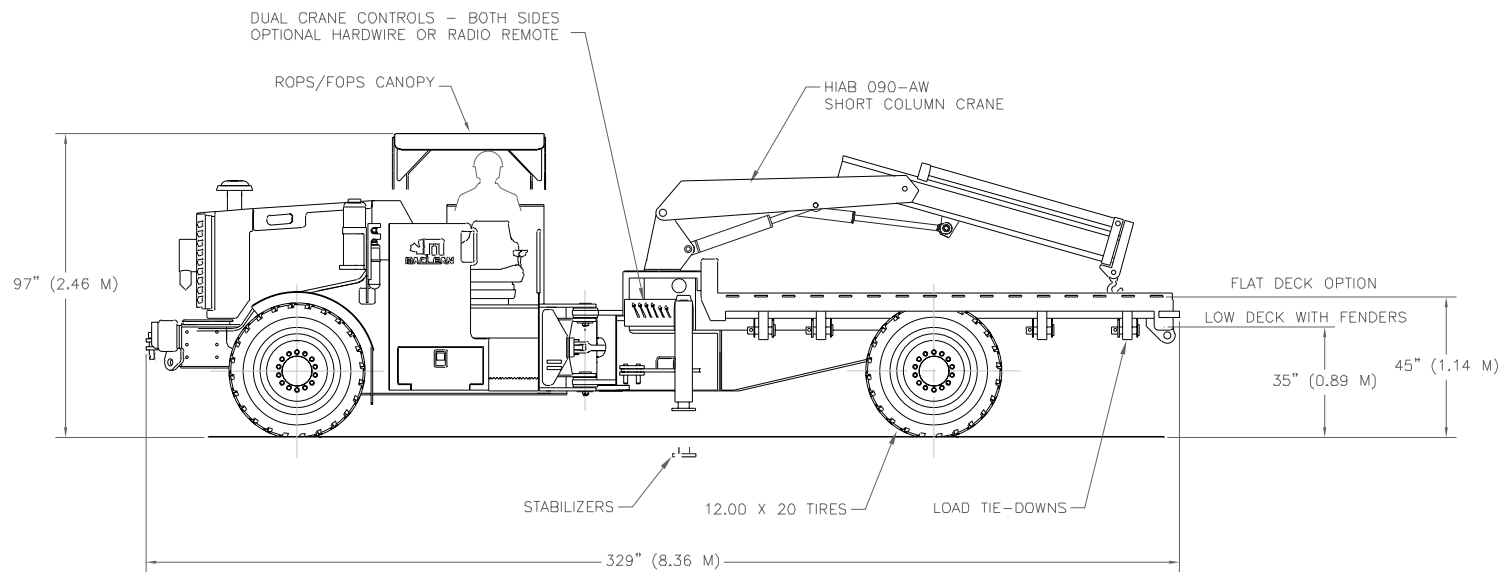
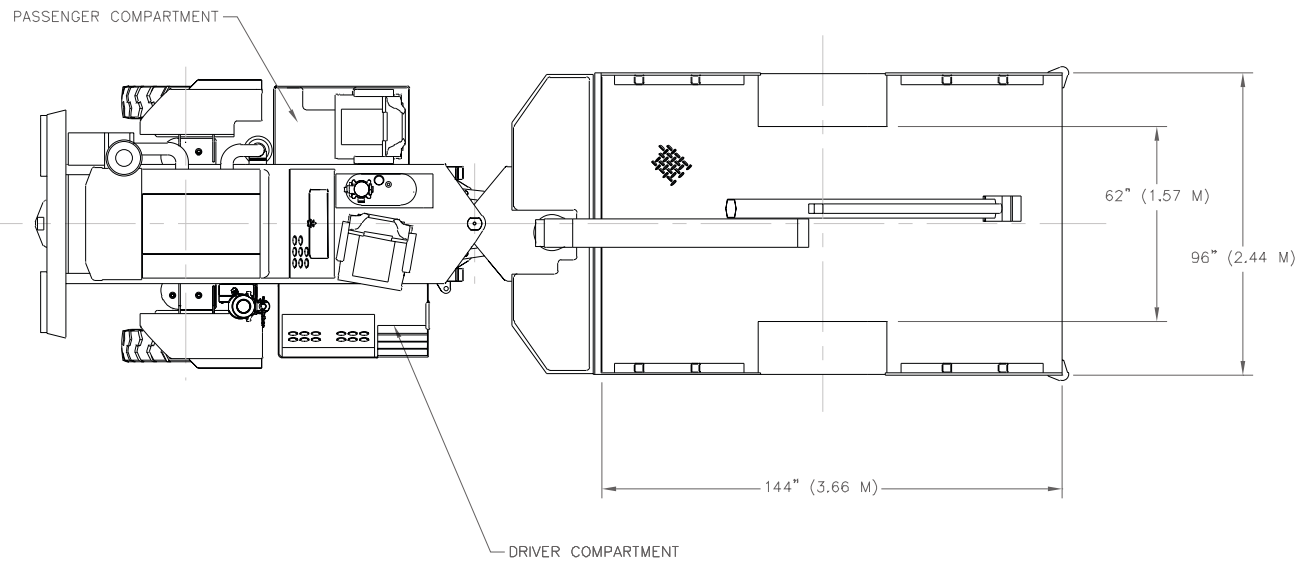




performance • reliability • innovation

Mine-Mate™ Series

BT-3 Boom Truck



Weights and Dimensions

Empty vehicle weight: 30,000 lbs (13,600 kg)
 Width: 96" (2.44 m)
 Length: 329" (8.36 m)
 Trimming height: 97" (2.46 m)

+/- 40 degrees steering angle
 Inside turning radius: 227" (5.77 m)
 Outside turning radius: 337" (8.56 m)



www.macleaneengineering.com

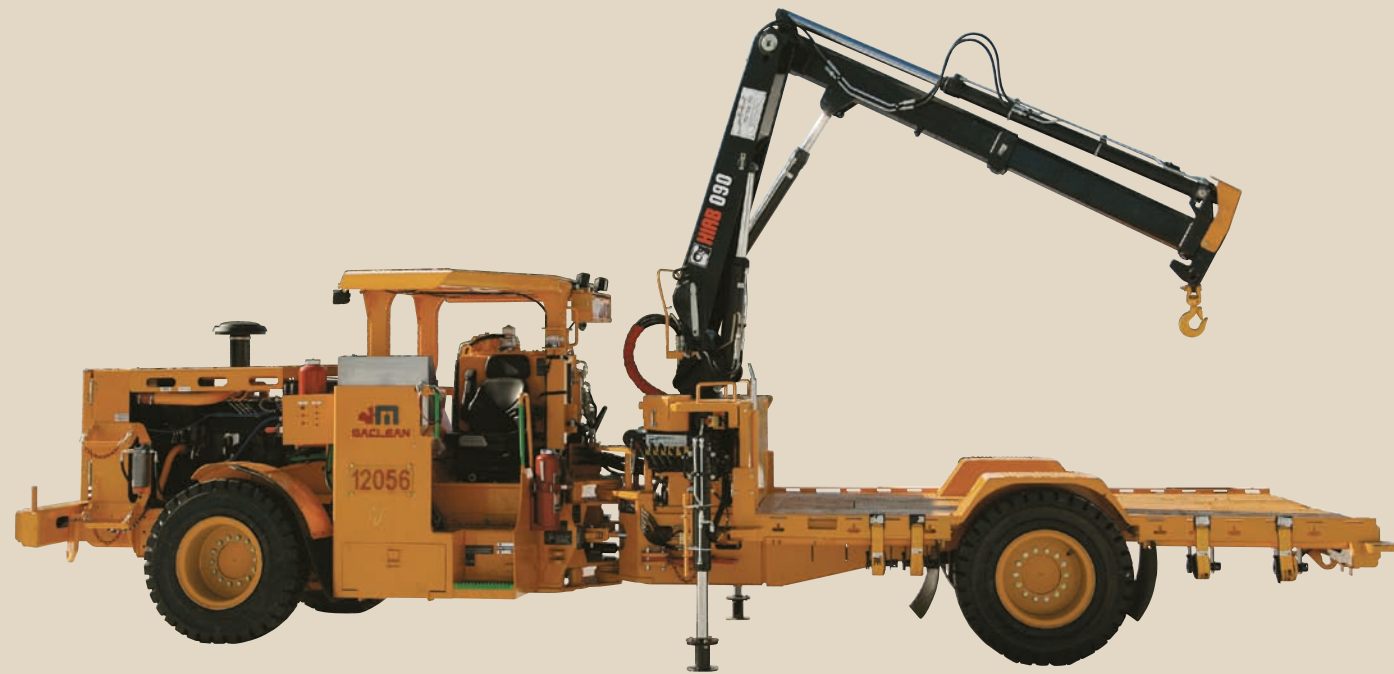
Sales and Product Support

1067 Kelly Lake Road
 Sudbury, Ontario Canada P3E 5P5

Main Office: +705.670.8014
 Customer Service: 1.866.856.3626
 Facsimile: +705.670.8023
 Email: sales@macleaneengineering.com

MacLean Engineering designs, develops, and supplies specialty equipment to meet the needs of the mining industry. We provide "best in class" product support that includes commissioning, training and after sales service.

Dependable Help.

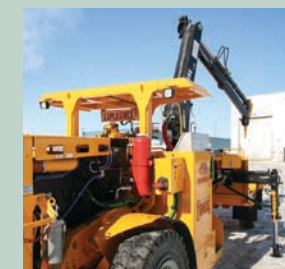


Features

- Up to 32,000 lbs (14,500 kg) payload
- Crane options to suit application
- Two stabilizing jacks
- Heavy duty frame construction
- Bulk handling options
- Clean high powered, electronically controlled engines
- Reliable, proven power train components
- Four wheel drive, articulated steer carrier
- Canopy and enclosed cab option
- Variety of deck options to suit application

BT-3 Boom Truck

Today's fast track mining methods require the timely supply of materials and equipment to widespread underground work places. The Mine-Mate™ BT-3 Boom Truck provides a reliable, high capacity, high speed system to meet this challenge.



The MacLean Advantage:

- ➔ Self loading / unloading capability
- ➔ Long life power train using industry proven components
- ➔ Clean burning, fuel-efficient engine minimizes harmful emissions
- ➔ Low cost, dependable mine supply vehicle
- ➔ Ease of maintenance with electronic engine diagnostics, accessible fuel filling and grease points
- ➔ Superior traction due to four wheel drive and powershift transmission
- ➔ Superior hose, cable and harness management

Applications

Rapid handling and supply system for bulk materials in underground trackless mines (ie.: shotcrete, timber, drilling supplies, pipes, fans, specialized skids, pallets and ANFO)

Transportation between surface and underground levels via internal ramp network